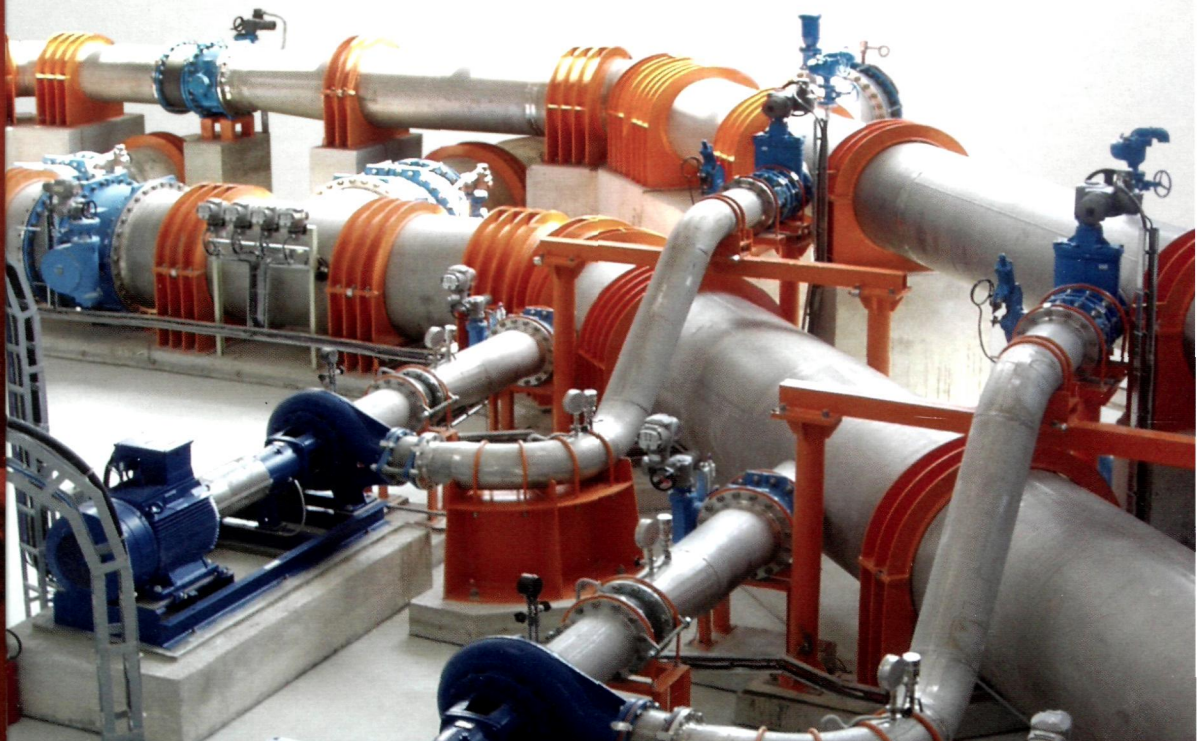


ANALYSIS AND MODELLING OF NON-STEADY FLOW IN PIPE AND CHANNEL NETWORKS

Vinko Jović



 WILEY

ANALYSIS AND MODELLING OF NON-STEADY FLOW IN PIPE AND CHANNEL NETWORKS

Vinko Jović

University of Split, Croatia



A John Wiley & Sons, Ltd., Publication

This edition first published 2013
© 2013 John Wiley & Sons, Ltd

Registered office

John Wiley & Sons Ltd, The Atrium, Southern Gate, Chichester, West Sussex, PO19 8SQ, United Kingdom

For details of our global editorial offices, for customer services and for information about how to apply for permission to reuse the copyright material in this book please see our website at www.wiley.com.

The right of the author to be identified as the author of this work has been asserted in accordance with the Copyright, Designs and Patents Act 1988.

All rights reserved. No part of this publication may be reproduced, stored in a retrieval system, or transmitted, in any form or by any means, electronic, mechanical, photocopying, recording or otherwise, except as permitted by the UK Copyright, Designs and Patents Act 1988, without the prior permission of the publisher.

Wiley also publishes its books in a variety of electronic formats. Some content that appears in print may not be available in electronic books.

Designations used by companies to distinguish their products are often claimed as trademarks. All brand names and product names used in this book are trade names, service marks, trademarks or registered trademarks of their respective owners. The publisher is not associated with any product or vendor mentioned in this book. This publication is designed to provide accurate and authoritative information in regard to the subject matter covered. It is sold on the understanding that the publisher is not engaged in rendering professional services. If professional advice or other expert assistance is required, the services of a competent professional should be sought.

Library of Congress Cataloging-in-Publication Data

Jovic, Vinko.

Analysis and modelling of non-steady flow in pipe and channel networks / Vinko Jovic.
pages cm

Includes bibliographical references and index.

ISBN 978-1-118-53214-0 (hardback : alk. paper) – ISBN 978-1-118-53686-5 (mobi) – ISBN 978-1-118-53687-2 (ebook/epdf) – ISBN 978-1-118-53688-9 (epub) – ISBN 978-1-118-53689-6 (wiley online library)

1. Pipe–Hydrodynamics. 2. Hydrodynamics. I. Title.

TC174.J69 2013

621.8'672–dc23

2012039412

A catalogue record for this book is available from the British Library.

ISBN: 978-1-118-53214-0

Typeset in 9/11pt Times by Aptara Inc., New Delhi, India

Printed and bound in Malaysia by Vivar Printing Sdn Bhd

Contents

Preface	xiii
1 Hydraulic Networks	1
1.1 Finite element technique	1
1.1.1 <i>Functional approximations</i>	1
1.1.2 <i>Discretization, finite element mesh</i>	3
1.1.3 <i>Approximate solution of differential equations</i>	6
1.2 Unified hydraulic networks	21
1.3 Equation system	23
1.3.1 <i>Elemental equations</i>	23
1.3.2 <i>Nodal equations</i>	24
1.3.3 <i>Fundamental system</i>	25
1.4 Boundary conditions	28
1.4.1 <i>Natural boundary conditions</i>	28
1.4.2 <i>Essential boundary conditions</i>	30
1.5 Finite element matrix and vector	30
Reference	36
Further reading	36
2 Modelling of Incompressible Fluid Flow	37
2.1 Steady flow of an incompressible fluid	37
2.1.1 <i>Equation of steady flow in pipes</i>	37
2.1.2 <i>Subroutine SteadyPipeMtx</i>	40
2.1.3 <i>Algorithms and procedures</i>	42
2.1.4 <i>Frontal procedure</i>	45
2.1.5 <i>Frontal solution of steady problem</i>	51
2.1.6 <i>Steady test example</i>	57
2.2 Gradually varied flow in time	59
2.2.1 <i>Time-dependent variability</i>	59
2.2.2 <i>Quasi non-steady model</i>	60
2.2.3 <i>Subroutine QuasiUnsteadyPipeMtx</i>	61
2.2.4 <i>Frontal solution of unsteady problem</i>	63
2.2.5 <i>Quasi-unsteady test example</i>	65
2.3 Unsteady flow of an incompressible fluid	65
2.3.1 <i>Dynamic equation</i>	65
2.3.2 <i>Subroutine RgdUnsteadyPipeMtx</i>	68
2.3.3 <i>Incompressible fluid acceleration</i>	69

2.3.4	<i>Acceleration test</i>	72
2.3.5	<i>Rigid test example</i>	72
	References	75
	Further Reading	75
3	Natural Boundary Condition Objects	77
3.1	Tank object	77
3.1.1	<i>Tank dimensioning</i>	77
3.1.2	<i>Tank model</i>	79
3.1.3	<i>Tank test examples</i>	83
3.2	Storage	90
3.2.1	<i>Storage equation</i>	90
3.2.2	<i>Fundamental system vector and matrix updating</i>	91
3.3	Surge tank	91
3.3.1	<i>Surge tank role in the hydropower plant</i>	91
3.3.2	<i>Surge tank types</i>	94
3.3.3	<i>Equations of oscillations in the supply system</i>	99
3.3.4	<i>Cylindrical surge tank</i>	101
3.3.5	<i>Model of a simple surge tank with upper and lower chamber</i>	108
3.3.6	<i>Differential surge tank model</i>	112
3.3.7	<i>Example</i>	117
3.4	Vessel	121
3.4.1	<i>Simple vessel</i>	121
3.4.2	<i>Vessel with air valves</i>	124
3.4.3	<i>Vessel model</i>	126
3.4.4	<i>Example</i>	127
3.5	Air valves	128
3.5.1	<i>Air valve positioning</i>	128
3.5.2	<i>Air valve model</i>	133
3.6	Outlets	135
3.6.1	<i>Discharge curves</i>	135
3.6.2	<i>Outlet model</i>	137
	Reference	138
	Further reading	138
4	Water Hammer – Classic Theory	141
4.1	Description of the phenomenon	141
4.1.1	<i>Travel of a surge wave following the sudden halt of a locomotive</i>	141
4.1.2	<i>Pressure wave propagation after sudden valve closure</i>	141
4.1.3	<i>Pressure increase due to a sudden flow arrest – the Joukowsky water hammer</i>	143
4.2	Water hammer celerity	143
4.2.1	<i>Relative movement of the coordinate system</i>	143
4.2.2	<i>Differential pressure and velocity changes at the water hammer front</i>	145
4.2.3	<i>Water hammer celerity in circular pipes</i>	147
4.3	Water hammer phases	149
4.3.1	<i>Sudden flow stop, velocity change $v_0 \rightarrow 0$</i>	151
4.3.2	<i>Sudden pipe filling, velocity change $0 \rightarrow v_0$</i>	154
4.3.3	<i>Sudden filling of blind pipe, velocity change $0 \rightarrow v_0$</i>	156
4.3.4	<i>Sudden valve opening</i>	159
4.3.5	<i>Sudden forced inflow</i>	161

4.4	Under-pressure and column separation	164
4.5	Influence of extreme friction	167
4.6	Gradual velocity changes	171
	4.6.1 <i>Gradual valve closing</i>	171
	4.6.2 <i>Linear flow arrest</i>	174
4.7	Influence of outflow area change	176.
	4.7.1 <i>Graphic solution</i>	178
	4.7.2 <i>Modified graphical procedure</i>	179
4.8	Real closure laws	180
4.9	Water hammer propagation through branches	181
4.10	Complex pipelines	183
4.11	Wave kinematics	183
	4.11.1 <i>Wave functions</i>	183
	4.11.2 <i>General solution</i>	187
	Reference	187
	Further reading	187
5	Equations of Non-steady Flow in Pipes	189
5.1	Equation of state	189
	5.1.1 <i>p,T phase diagram</i>	189
	5.1.2 <i>p,V phase diagram</i>	190
5.2	Flow of an ideal fluid in a streamtube	195
	5.2.1 <i>Flow kinematics along a streamtube</i>	195
	5.2.2 <i>Flow dynamics along a streamtube</i>	198
5.3	The real flow velocity profile	202
	5.3.1 <i>Reynolds number, flow regimes</i>	202
	5.3.2 <i>Velocity profile in the developed boundary layer</i>	203
	5.3.3 <i>Calculations at the cross-section</i>	204
5.4	Control volume	205
5.5	Mass conservation, equation of continuity	206
	5.5.1 <i>Integral form</i>	206
	5.5.2 <i>Differential form</i>	207
	5.5.3 <i>Elastic liquid</i>	207
	5.5.4 <i>Compressible liquid</i>	209
5.6	Energy conservation law, the dynamic equation	209
	5.6.1 <i>Total energy of the control volume</i>	209
	5.6.2 <i>Rate of change of internal energy</i>	210
	5.6.3 <i>Rate of change of potential energy</i>	210
	5.6.4 <i>Rate of change of kinetic energy</i>	210
	5.6.5 <i>Power of normal forces</i>	211
	5.6.6 <i>Power of resistance forces</i>	212
	5.6.7 <i>Dynamic equation</i>	212
	5.6.8 <i>Flow resistances, the dynamic equation discussion</i>	213
5.7	Flow models	215
	5.7.1 <i>Steady flow</i>	215
	5.7.2 <i>Non-steady flow</i>	217
5.8	Characteristic equations	220
	5.8.1 <i>Elastic liquid</i>	220
	5.8.2 <i>Compressible fluid</i>	223

5.9	Analytical solutions	225
5.9.1	<i>Linearization of equations – wave equations</i>	225
5.9.2	<i>Riemann general solution</i>	226
5.9.3	<i>Some analytical solutions of water hammer</i>	227
	Reference	229
	Further reading	229
6	Modelling of Non-steady Flow of Compressible Liquid in Pipes	231
6.1	Solution by the method of characteristics	231
6.1.1	<i>Characteristic equations</i>	231
6.1.2	<i>Integration of characteristic equations, wave functions</i>	232
6.1.3	<i>Integration of characteristic equations, variables h, v</i>	234
6.1.4	<i>The water hammer is the pipe with no resistance</i>	235
6.1.5	<i>Water hammers in pipes with friction</i>	243
6.2	Subroutine <code>UnsteadyPipeMtx</code>	251
6.2.1	Subroutine <code>FemUnsteadyPipeMtx</code>	252
6.2.2	Subroutine <code>ChtxUnsteadyPipeMtx</code>	255
6.3	Comparison tests	261
6.3.1	<i>Test example</i>	261
6.3.2	<i>Conclusion</i>	263
	Further reading	264
7	Valves and Joints	265
7.1	Valves	265
7.1.1	<i>Local energy head losses at valves</i>	265
7.1.2	<i>Valve status</i>	267
7.1.3	<i>Steady flow modelling</i>	267
7.1.4	<i>Non-steady flow modelling</i>	269
7.2	Joints	279
7.2.1	<i>Energy head losses at joints</i>	279
7.2.2	<i>Steady flow modelling</i>	279
7.2.3	<i>Non-steady flow modelling</i>	282
7.3	Test example	288
	Reference	290
	Further reading	290
8	Pumping Units	291
8.1	Introduction	291
8.2	Euler's equations of turbo engines	291
8.3	Normal characteristics of the pump	295
8.4	Dimensionless pump characteristics	301
8.5	Pump specific speed	303
8.6	Complete characteristics of turbo engine	305
8.6.1	<i>Normal and abnormal operation</i>	305
8.6.2	<i>Presentation of turbo engine characteristics depending on the direction of rotation</i>	305
8.6.3	<i>Knapp circle diagram</i>	305
8.6.4	<i>Suter curves</i>	308
8.7	Drive engines	310
8.7.1	<i>Asynchronous or induction motor</i>	310

8.7.2	<i>Adjustment of rotational speed by frequency variation</i>	311
8.7.3	<i>Pumping unit operation</i>	312
8.8	Numerical model of pumping units	314
8.8.1	<i>Normal pump operation</i>	314
8.8.2	<i>Reconstruction of complete characteristics from normal characteristics</i>	318
8.8.3	<i>Reconstruction of a hypothetical pumping unit</i>	321
8.8.4	<i>Reconstruction of the electric motor torque curve</i>	322
8.9	Pumping element matrices	323
8.9.1	<i>Steady flow modelling</i>	323
8.9.2	<i>Unsteady flow modelling</i>	327
8.10	Examples of transient operation stage modelling	333
8.10.1	<i>Test example (A)</i>	334
8.10.2	<i>Test example (B)</i>	336
8.10.3	<i>Test example (C)</i>	339
8.10.4	<i>Test example (D)</i>	341
8.11	Analysis of operation and types of protection against pressure excesses	345
8.11.1	<i>Normal and accidental operation</i>	345
8.11.2	<i>Layout</i>	345
8.11.3	<i>Supply pipeline, suction basin</i>	346
8.11.4	<i>Pressure pipeline and pumping station</i>	348
8.11.5	<i>Booster station</i>	350
8.12	Something about protection of sewage pressure pipelines	353
8.13	Pumping units in a pressurized system with no tank	355
8.13.1	<i>Introduction</i>	355
8.13.2	<i>Pumping unit regulation by pressure switches</i>	355
8.13.3	<i>Hydrophor regulation</i>	358
8.13.4	<i>Pumping unit regulation by variable rotational speed</i>	360
	Reference	362
	Further reading	362
9	Open Channel Flow	363
9.1	Introduction	363
9.2	Steady flow in a mildly sloping channel	363
9.3	Uniform flow in a mildly sloping channel	365
9.3.1	<i>Uniform flow velocity in open channel</i>	365
9.3.2	<i>Conveyance, discharge curve</i>	368
9.3.3	<i>Specific energy in a cross-section: Froude number</i>	372
9.3.4	<i>Uniform flow programming solution</i>	377
9.4	Non-uniform gradually varied flow	378
9.4.1	<i>Non-uniform flow characteristics</i>	378
9.4.2	<i>Water level differential equation</i>	380
9.4.3	<i>Water level shapes in prismatic channels</i>	382
9.4.4	<i>Transitions between supercritical and subcritical flow, hydraulic jump</i>	383
9.4.5	<i>Water level shapes in a non-prismatic channel</i>	391
9.4.6	<i>Gradually varied flow programming solutions</i>	395
9.5	Sudden changes in cross-sections	398
9.6	Steady flow modelling	401
9.6.1	<i>Channel stretch discretization</i>	401
9.6.2	<i>Initialization of channel stretches</i>	402

9.6.3	<i>Subroutine SubCriticalSteadyChannelMtx</i>	404
9.6.4	<i>Subroutine SuperCriticalSteadyChannelMtx</i>	406
9.7	Wave kinematics in channels	407
9.7.1	<i>Propagation of positive and negative waves</i>	407
9.7.2	<i>Velocity of the wave of finite amplitude</i>	407
9.7.3	<i>Elementary wave celerity</i>	409
9.7.4	<i>Shape of positive and negative waves</i>	411
9.7.5	<i>Standing wave – hydraulic jump</i>	412
9.7.6	<i>Wave propagation through transitional stretches</i>	413
9.8	Equations of non-steady flow in open channels	414
9.8.1	<i>Continuity equation</i>	414
9.8.2	<i>Dynamic equation</i>	416
9.8.3	<i>Law of momentum conservation</i>	417
9.9	Equation of characteristics	422
9.9.1	<i>Transformation of non-steady flow equations</i>	422
9.9.2	<i>Procedure of transformation into characteristics</i>	423
9.10	Initial and boundary conditions	424
9.11	Non-steady flow modelling	425
9.11.1	<i>Integration along characteristics</i>	425
9.11.2	<i>Matrix and vector of the channel finite element</i>	427
9.11.3	<i>Test examples</i>	431
	References	434
	Further reading	435
10	Numerical Modelling in Karst	437
10.1	Underground karst flows	437
10.1.1	<i>Introduction</i>	437
10.1.2	<i>Investigation works in karst catchment</i>	437
10.1.3	<i>The main development forms of karst phenomena in the Dinaric area</i>	438
10.1.4	<i>The size of the catchment</i>	443
10.2	Conveyance of the karst channel system	446
10.2.1	<i>Transformation of rainfall into spring hydrographs</i>	446
10.2.2	<i>Linear filtration law</i>	447
10.2.3	<i>Turbulent filtration law</i>	449
10.2.4	<i>Complex flow, channel flow, and filtration</i>	451
10.3	Modelling of karst channel flows	453
10.3.1	<i>Karst channel finite elements</i>	453
10.3.2	<i>Subroutine SteadyKana1Mtx</i>	454
10.3.3	<i>Subroutine UnsteadyKana1Mtx</i>	456
10.3.4	<i>Tests</i>	458
10.4	Method of catchment discretization	463
10.4.1	<i>Discretization of karst catchment channel system without diffuse flow</i>	463
10.4.2	<i>Equation of the underground accumulation of a karst sub-catchment</i>	466
10.5	Rainfall transformation	468
10.5.1	<i>Uniform input hydrograph</i>	468
10.5.2	<i>Rainfall at the catchment</i>	473
10.6	Discretization of karst catchment with diffuse and channel flow	474
	References	477
	Further reading	477

11	Convective-dispersive Flows	479
11.1	Introduction	479
11.2	A reminder of continuum mechanics	479
11.3	Hydrodynamic dispersion	483
11.4	Equations of convective-dispersive heat transfer	485
11.5	Exact solutions of convective-dispersive equation	487
	11.5.1 <i>Convective equation</i>	487
	11.5.2 <i>Convective-dispersive equation</i>	488
	11.5.3 <i>Transformation of the convective-dispersive equation</i>	490
11.6	Numerical modelling in a hydraulic network	490
	11.6.1 <i>The selection of solution basis, shape functions</i>	490
	11.6.2 <i>Elemental equations: equation integration on the finite element</i>	492
	11.6.3 <i>Nodal equations</i>	495
	11.6.4 <i>Boundary conditions</i>	495
	11.6.5 <i>Matrix and vector of finite element</i>	496
	11.6.6 <i>Numeric solution test</i>	497
	11.6.7 <i>Heat exchange of water table</i>	499
	11.6.8 <i>Equilibrium temperature and linearization</i>	500
	11.6.9 <i>Temperature disturbance caused by artificial sources</i>	501
	References	503
	Further reading	503
12	Hydraulic Vibrations in Networks	505
12.1	Introduction	505
12.2	Vibration equations of a pipe element	506
12.3	Harmonic solution for the pipe element	508
12.4	Harmonic solutions in the network	509
12.5	Vibration source modelling	512
12.6	Hints to implementation in <code>SimpipCore</code>	512
12.7	Illustrative examples	515
	Reference	518
	Further reading	518
Index		519